



VALVOLA UNIDIREZIONALE TENUTA A CONO

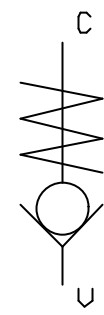
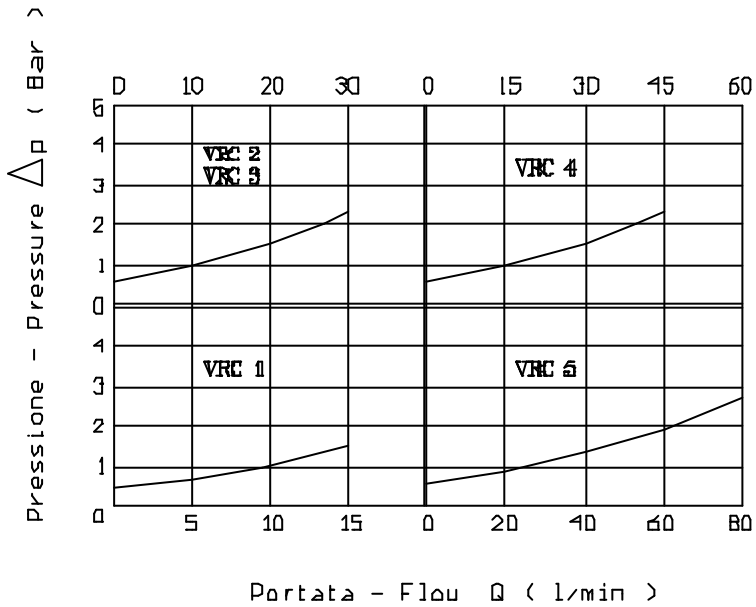
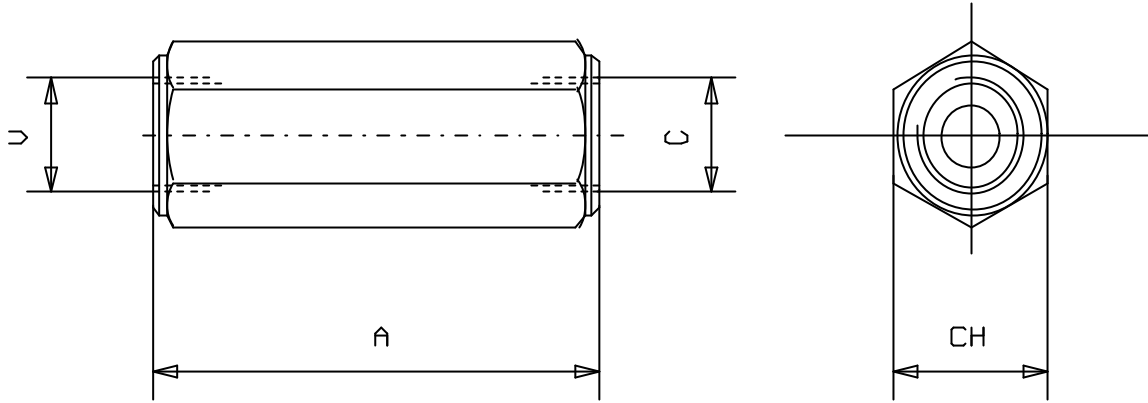
CHECK VALVES, POPPET TYPE, LINE MOUNTING

Tipo/Type:

VRC

1

02.00



CODICE	U - C	A	CH	Portata Q (l/min)	Press. max. (Bar)	Cracking pressure (Bar)
VRC 1	G 1/4	62	19	18	350	0.5 6
VRC 2	G 3/8	68	24	30	350	0.5 5
VRC 3	M18x1.5	68	24	30	350	0.5 5
VRC 4	G 1/2	78	27	50	300	0.5 8
VRC 5	G 3/4	88	38	90	300	0.5 5
VRC 6	G 1	112	46	120	300	0.5 7