



VALVOLA DI CONTROLLO DISCESA COMPENSATA REGOLABILE

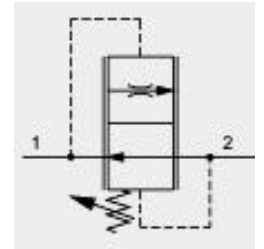
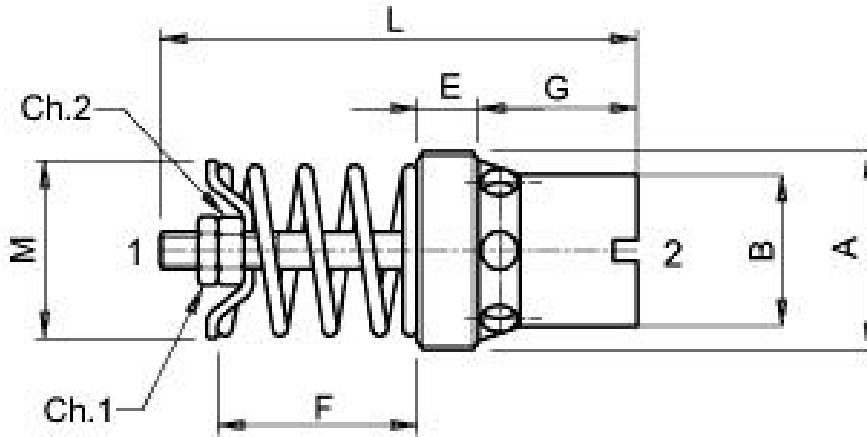
ADJUSTABLE COMPENSATED LOAD CONTROL VALVES

Tipo/Type:

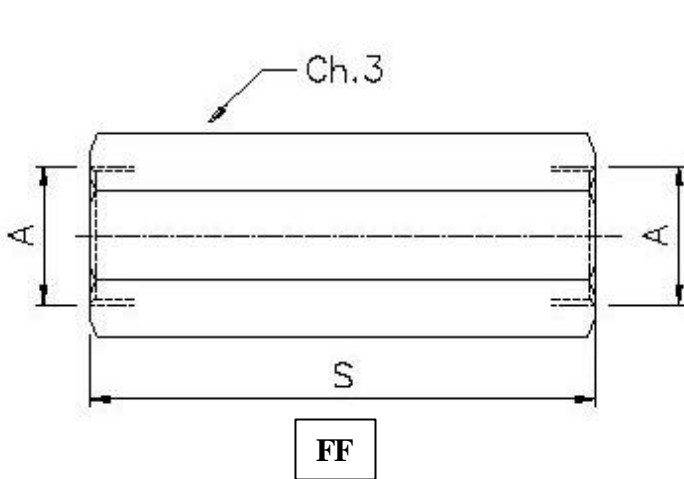
VCD/CR ...

2

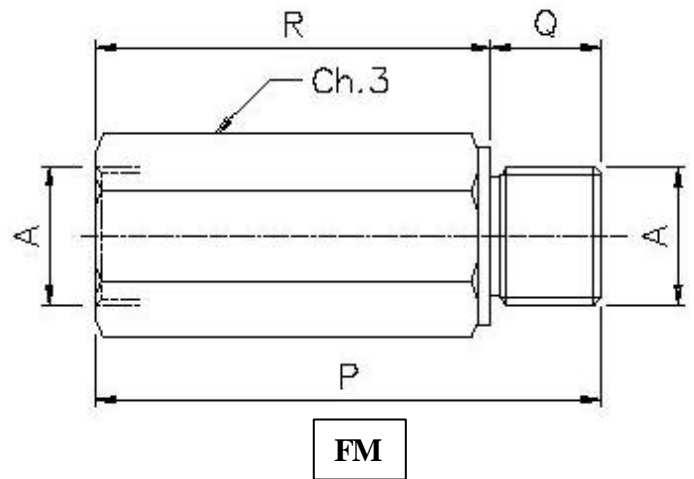
03.50



CODICE CODE	A	Max Flow (l/min)	Max Pressure (bar)	B	C	E	G	L	M	CH 1	CH 2	Tightening torque (Nm)	Weight (kg)
VCD/CR 14	G 1/4	15	300	10	4	6.5	13.5	39	10	5.5	5.5	6	0.013
VCD/CR 38	G 3/8	35	300	11.5	6	7	15	45	14	6	7	8	0.024
VCD/CR 120	G 1/2	65	300	16	6	7	16.5	51	18	6	7	12	0.037
VCD/CR 340	G 3/4	150	300	20	8	9.5	21.5	62	23	6	7	15	0.070
VCD/CR 1000	G 1	250	250	26	14	15	25	82	28.5	8	8	20	0.150
VCD/CR 1140	G 1-1/4	400	250	33	7.5	20.5	31.5	95	35	10	10	25	0.270



FF



FM

Campo di regolazione - Range of flow (l/min)						
CODE	A	B	C	D	E	F
VCD/CR 14	1-1.6	1.5-2.5	2.4-4	3.9-6.3	6.2-10	9.5-15
VCD/CR 38	2.5-4	3.8-6.3	6.1-10	9.8-16	15.8-25	24.5-35
VCD/CR 120	16-21	20.5-28	27.5-37	36.5-50	48-65	/
VCD/CR 340	37-50	48-65	63-90	88-120	115-150	/
VCD/CR 1000	80-100	100-130	128-162	160-200	195-250	/
VCD/CR 1140	160-210	205-250	245-280	270-340	330-400	/

On request we can supply setted valves.

**ORDERING CODE:**

Example:

VCD / CR 38/A - FF

Port: G 3/8

Range of flow: "A"

Column type: female-female