



VALVOLA DI SEQUENZA IN LINEA

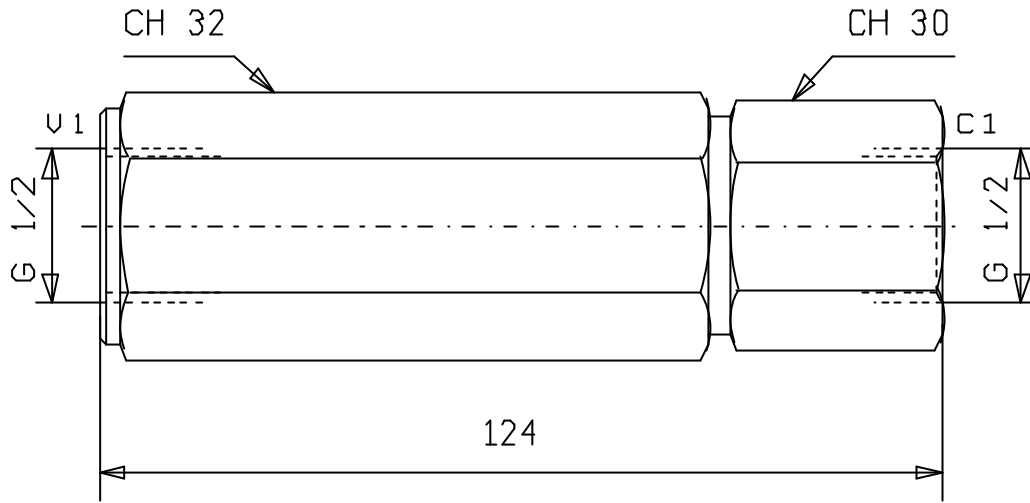
SEQUENCE VALVES, DIRECT ACTING, LINE MOUNTING

Tipo/Type:

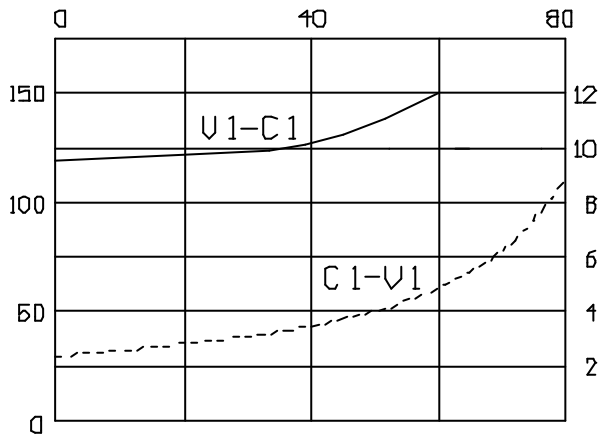
VSQ/OC 120/32

4

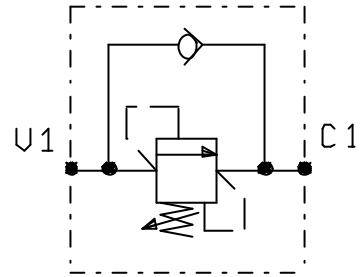
02.01



Pressione - Pressure Δp (Bar)



Portata - Flow Q (l/min)



Press. max.
(Bar)

350

CODICE	Campo taratura adj.press.range (Bar)	Taratura standard std. setting (Bar)
VSQ/OC 120/32	30 - 120	80