



VALVOLA DI SEQUENZA IN LINEA, COMPENSATA

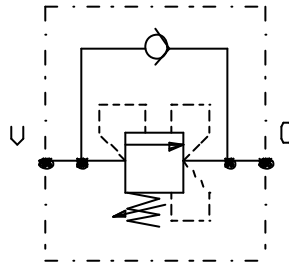
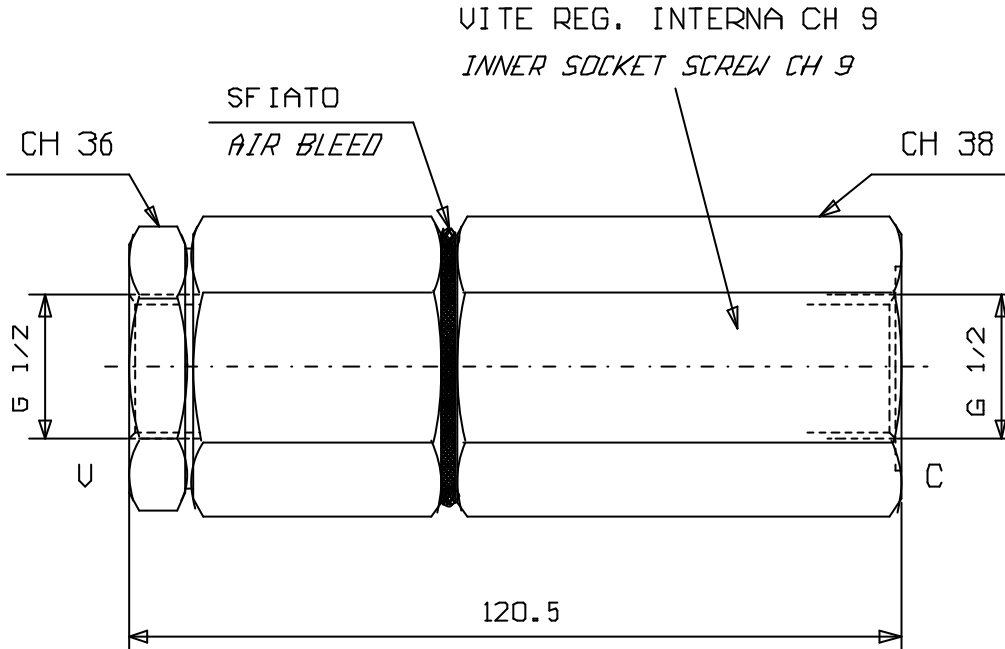
SELF COMPENSATED SEQUENCE VALVES, LINE MOUNTING

Tipo/Type:

VSOL/OC 120/CC

4

02.51



MOLLE Campo taratura Adj.press.range (bar)
50 - 140

Press. max. ( Bar )
350

Portata max. ( l/min )
100

Per un funzionamento corretto deve essere presente una pressione sul circuito secondario di almeno 20 bar.

*For good performance, the pressure in the secondary circuit should be not less that 20 bar.*