



VALVOLA DI SEQUENZA IN LINEA, COMPENSATA

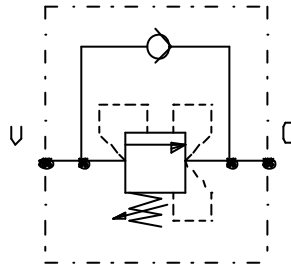
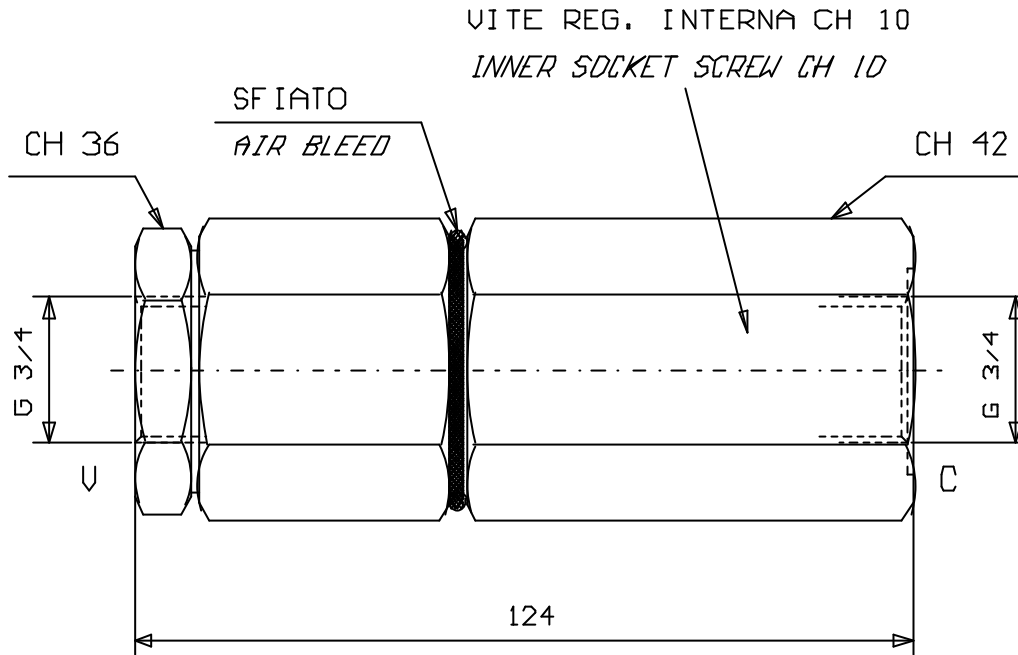
SELF COMPENSATED SEQUENCE VALVES, LINE MOUNTING

Tipo/Type:

VSOL/OC 340/CC

4

02.52



MOLLE Campo taratura Adj. press. range (bar)	
60 - 160	STANDARD
80 - 250	ON REQUEST

Press. max. (Bar)
350

Portata max. (l/min)
120

Per un funzionamento corretto deve essere presente una pressione sul circuito secondario di almeno 20 bar.

For good performance, the pressure in the secondary circuit should be not less than 20 bar.