



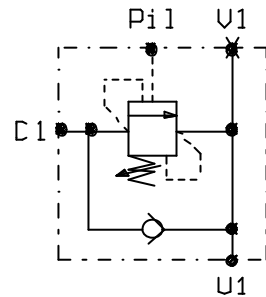
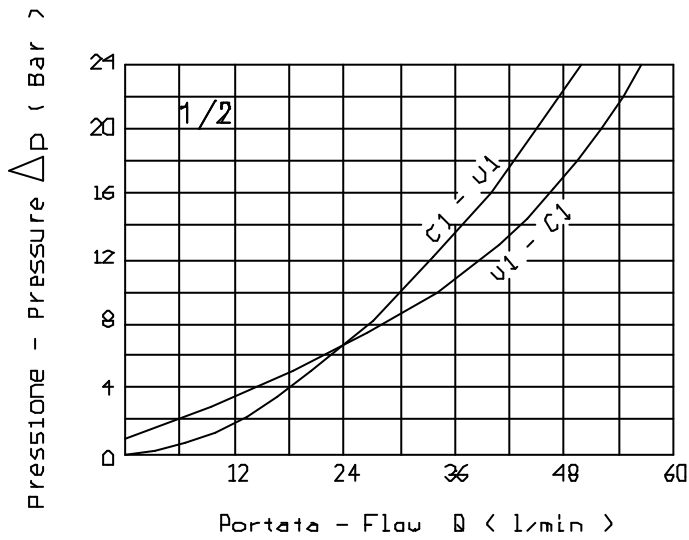
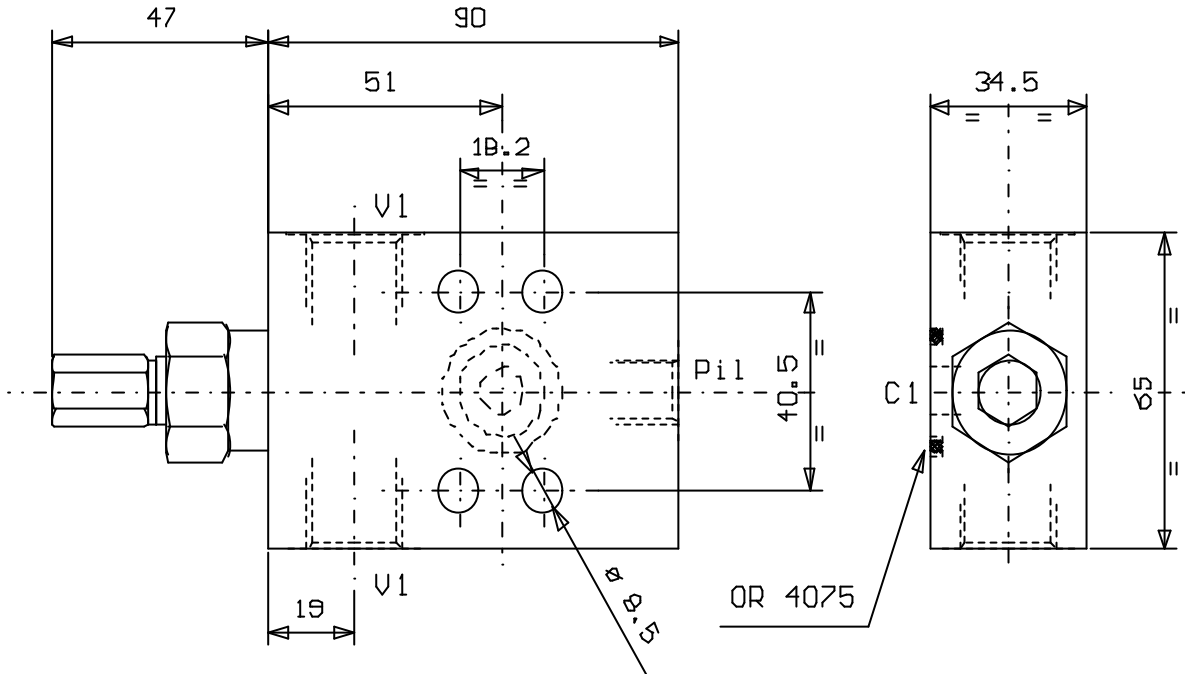
VALVOLA DI BILANCIAMENTO, SEMPLICE EFFETTO,  
SERIE "TR", FLANGIABILE

PILOT ASSISTED, FLANGEABLE, SERIES "TR" OVERCENTRE

Tipo/Type: A-VBSE/TR/FL/SAE 120

5

33.47



Press. max. ( Bar )
350

Portata max. ( l/min )
60

Rapp. Pilot.
4.2:1

Collettore in acciaio  
Steel body

ATTACCHI	
U1	G 1/2
C1	1/2" SAE 6000
P11	G 1/4