



VALVOLA DI BILANCIAMENTO, A CARTUCCIA
SERIE "TR-CC"

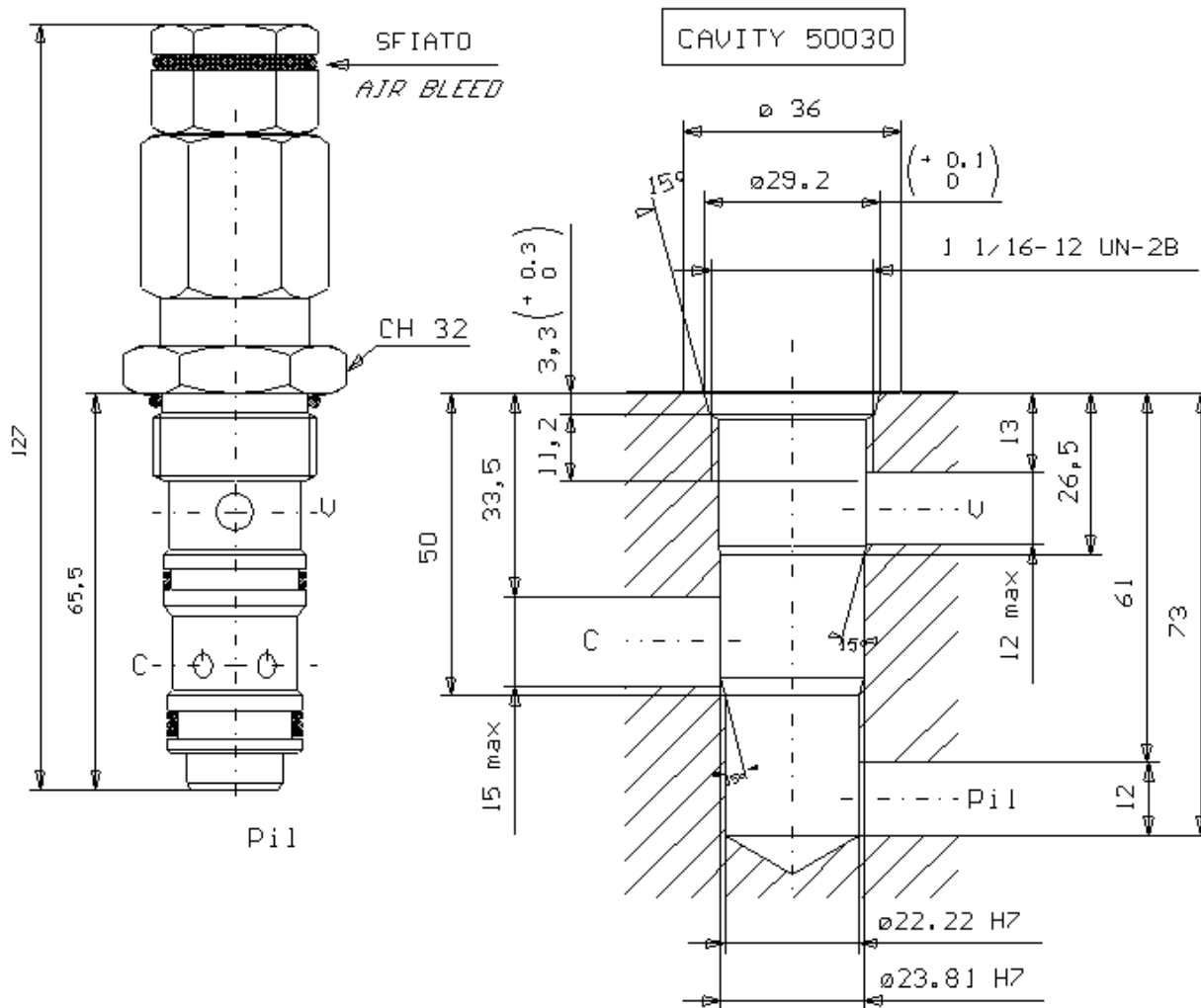
PILOT ASSISTED, CARTRIDGE TYPE, SERIES "TR-CC" OVERCENTRE

Tipo/Type:

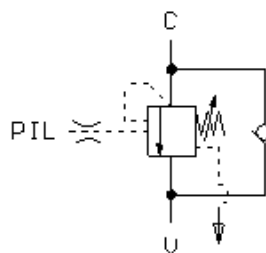
VBSE/TR/C 30/CC

5

35.00



Coppia di serraggio
Installation torque
115 - 125 (Nm)



Rapp.
Pilot.
4.2:1

Press. max.
(Bar)
350

Portata max.
(l/min)
60