



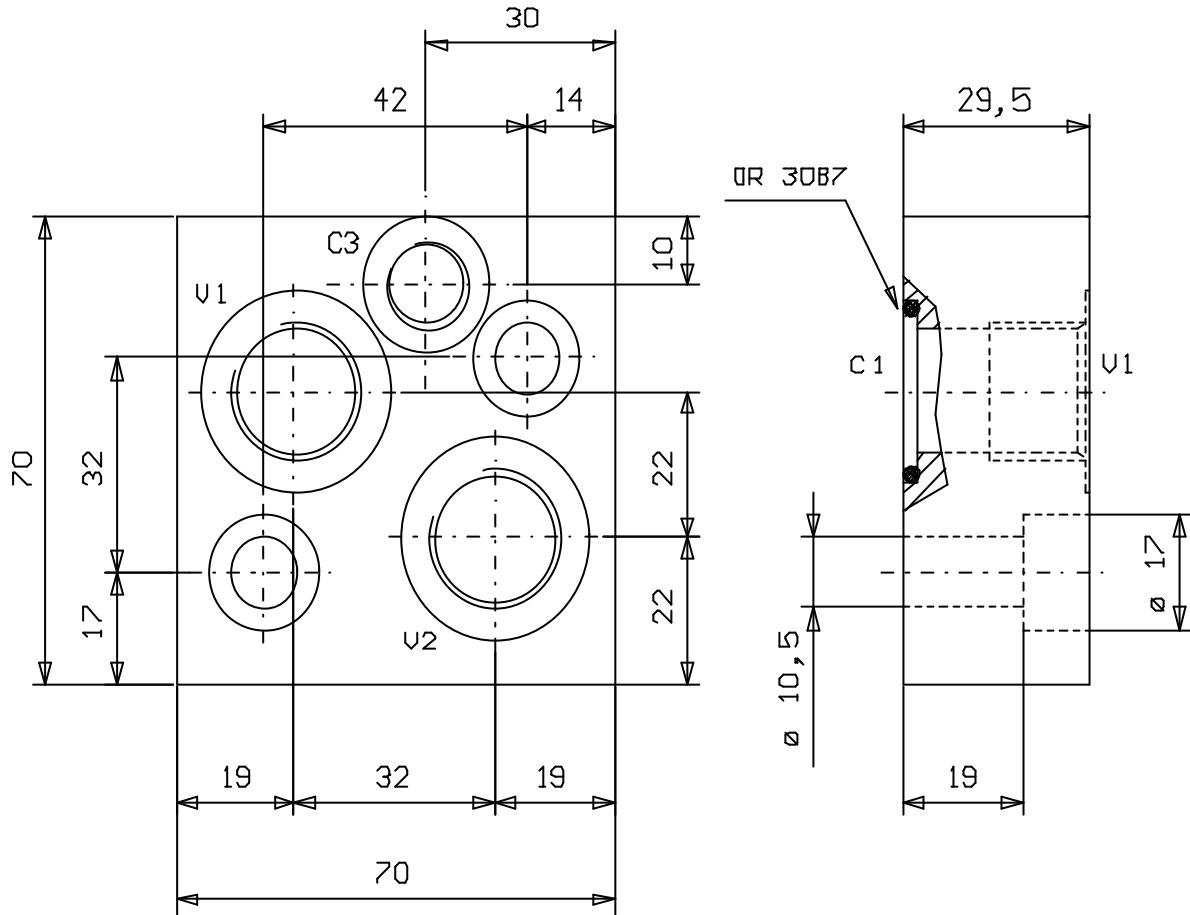
**VALVOLA SELETRICE FLANGIABILE
SU MOTORI DANFOSS OMS**

SHUTTLE VALVE, FACE MOUNTING,
FOR DANFOSS MOTORS OMS

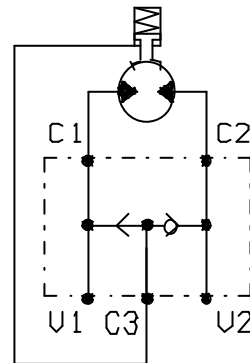
Tipo/Type: **VSL/FL/OMS 120**

7

02.30



ATTACCHI	
U1 - U2	G 1/2
C3	G 1/4



Press. max. (Bar)
350

Portata max. (l/min)
50