



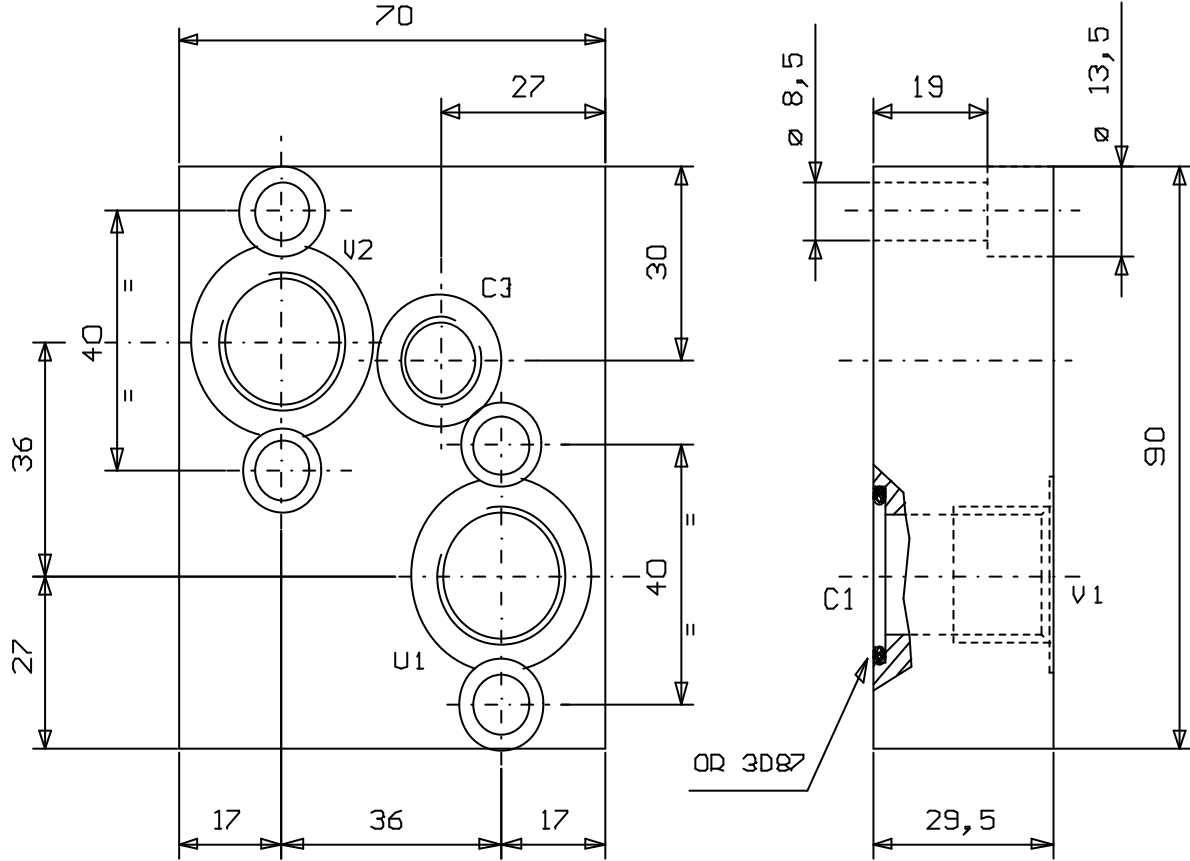
**VALVOLA SELETRICE FLANGIABILE  
SU MOTORI DANFOSS OMP-OMR**

SHUTTLE VALVE, FACE MOUNTING,  
FOR DANFOSS MOTORS OMP-OMR

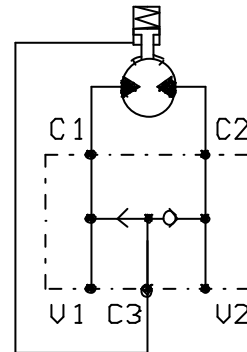
Tipo/Type: **VSL/FL/OMP-OMR 120**

7

02.32



ATTACCHI	
U1 - U2	G 1/2
C3	G 1/4



Press. max. ( Bar )
350

Portata max. ( l/min )
50