



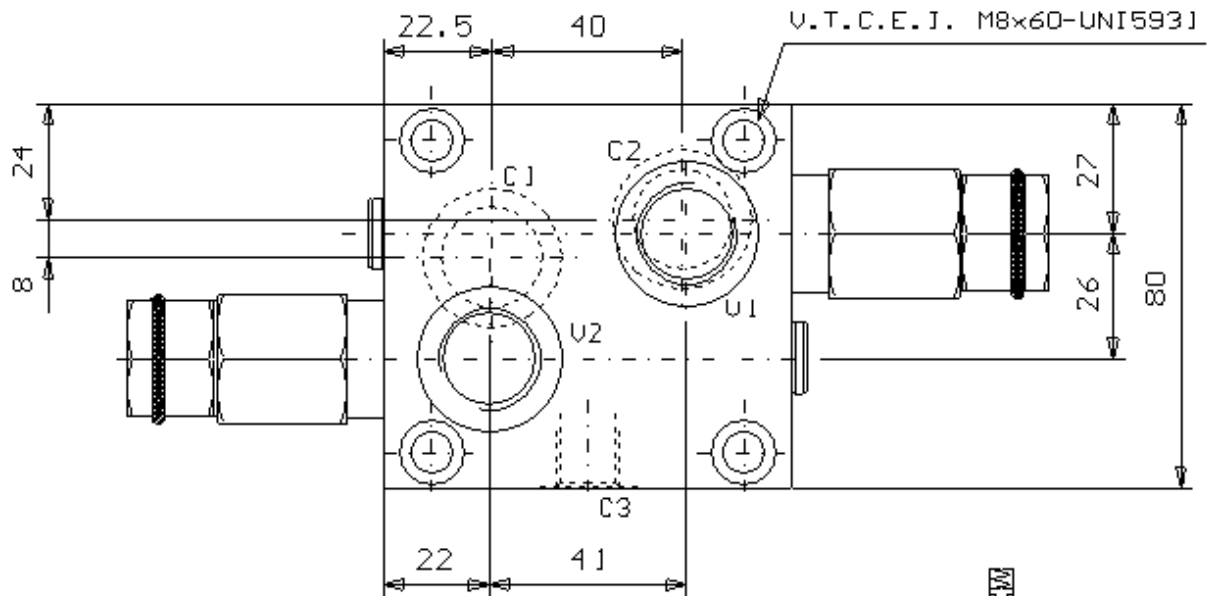
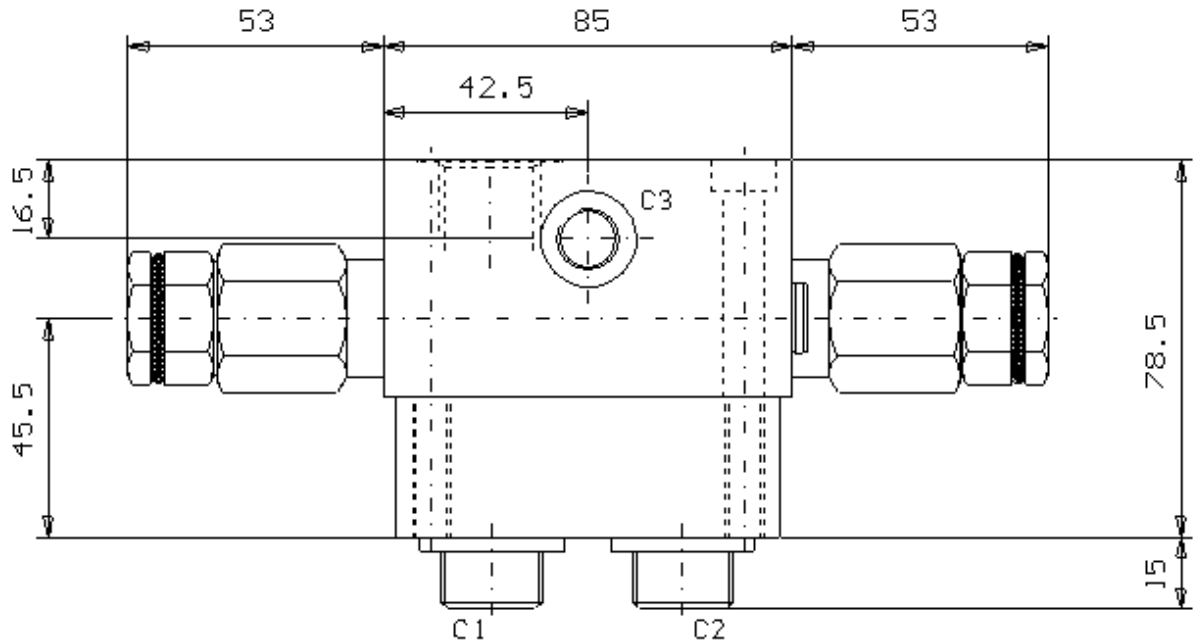
VALV. DI BILANC. DOPPIO EFF., SERIE "TR-CC", CON SBLOCCO FRENO
 FLANG. SU MOTORI SAMHYDRAULIK: SERIE AG-AR-BG-BR

DUAL OVERCENTRE VALVE, "TR-CC" SERIES, FACE MOUNTING,
 FOR SAM HYDRAULIK MOTORS: AG-AR-BG-BR SERIES, WITH BRAKE UNCLIPPING

Tipo/Type: VBDE/TR/FL/BG 120/SF/CC

7

20.45



ATTACCHI / PORTS	
U1 - U2	G 1/2
C1 - C2	G 1/4
C3	G 1/4

Rapp. Pilot.
4.2:1

Press. max. (Bar)
250

Portata max. (l/min)
60

