



VALVOLA ANTIURTO DOPPIA INCROCIATA
FLANGIABILE SU MOTORI CHAR-LYNN: SERIE "H"

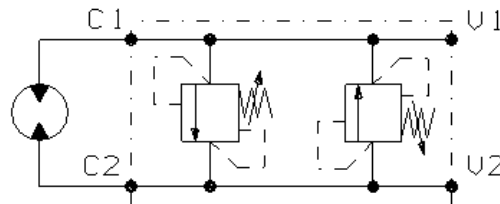
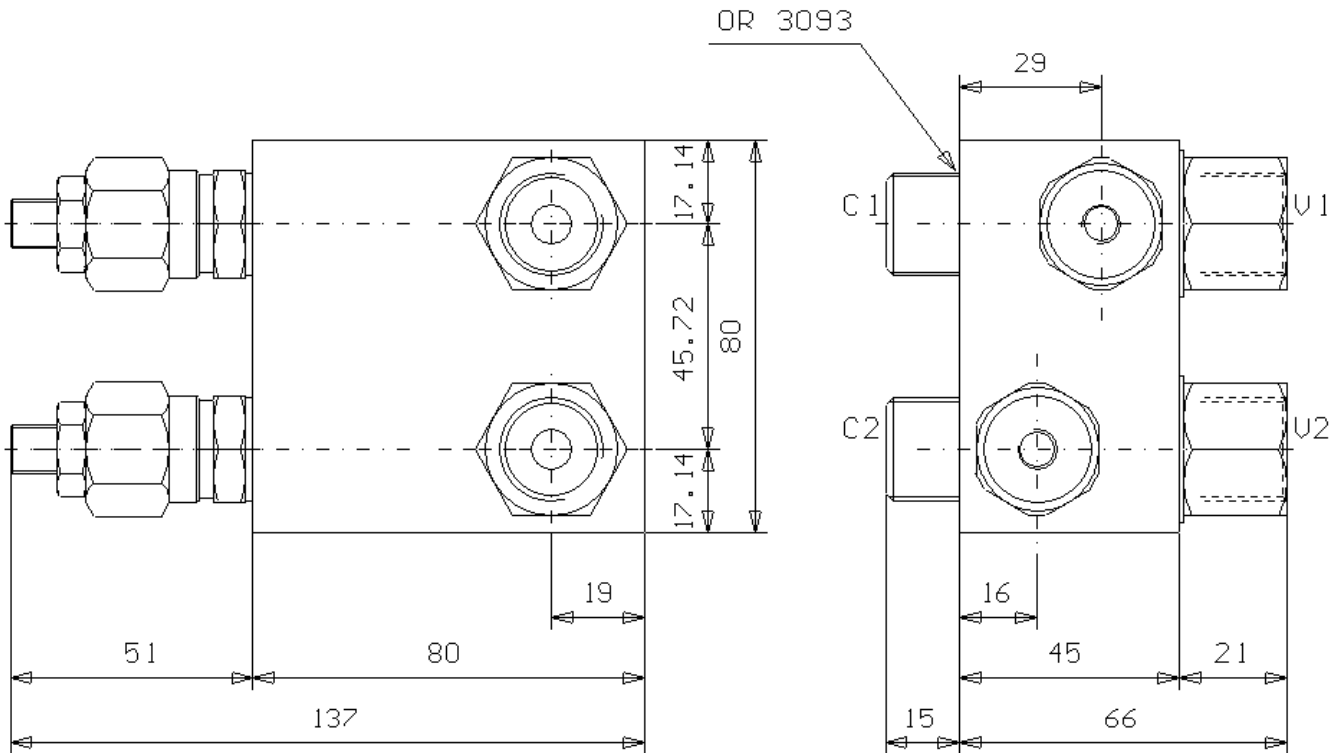
ANTI-SHOCK VALVE, FACE MOUNTING, FOR CHAR-LYNN MOTORS: "H" SERIES

Tipo/Type:

VADI/FL/CHL/H 120

7

41.00



U1 - U2
C1 - C2
G 1/2

Press. max. (Bar)
250

Portata max. (l/min)
50