



ELEMENTO MODULARE CON VALV. DI BILANCIAMENTO,
SEMPLICE EFFETTO, SERIE "TR", CETOP 03

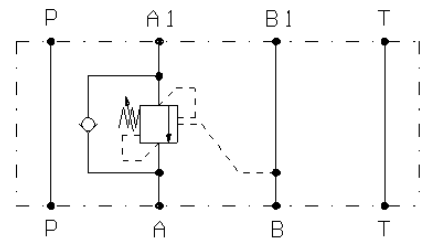
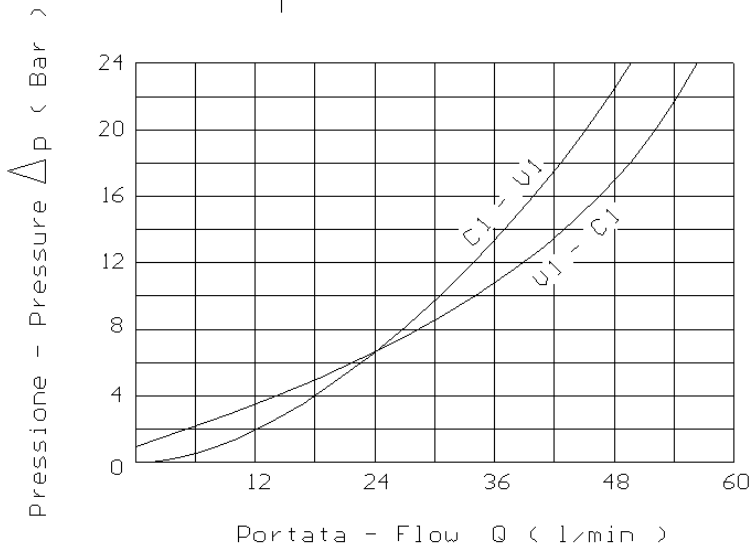
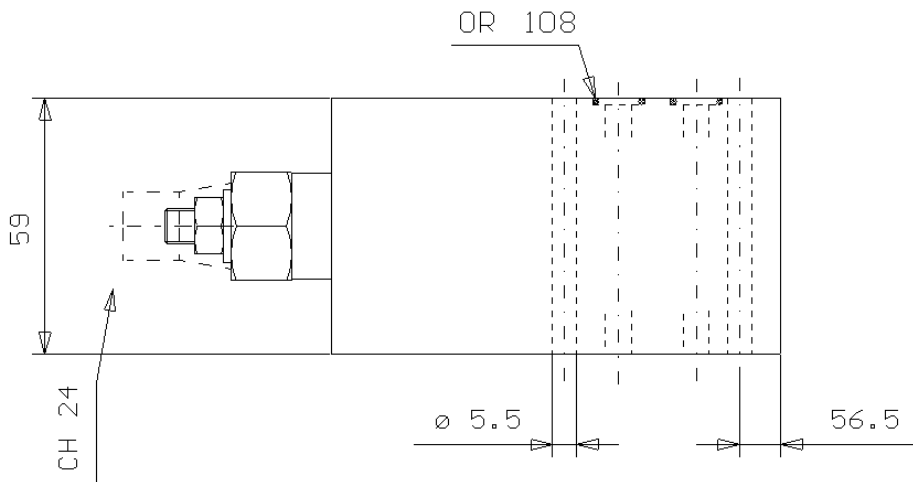
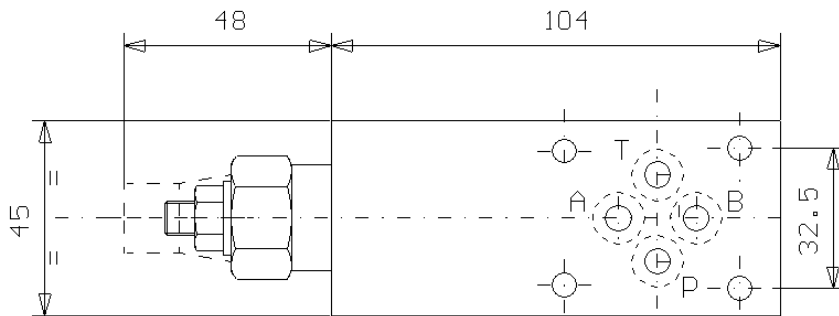
SANDWICH VALVE WITH SINGLE PILOT ASSISTED OVERCENTRE,
"TR" SERIES, CETOP 03

Tipo/Type:

VBSE/TR/CT 3-A

8

02.95



Press. max. (Bar)
350

Rapp. Pilot.
4.2:1

Portata max. (l/min)
50