



ELEMENTO MODULARE CON VALV. DI BILANCIAMENTO,
 DOPPIO EFFETTO, SERIE "TR", CETOP 03

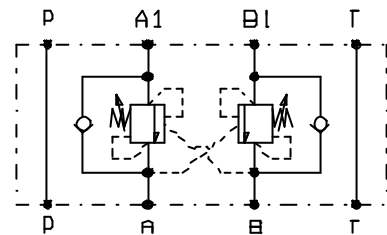
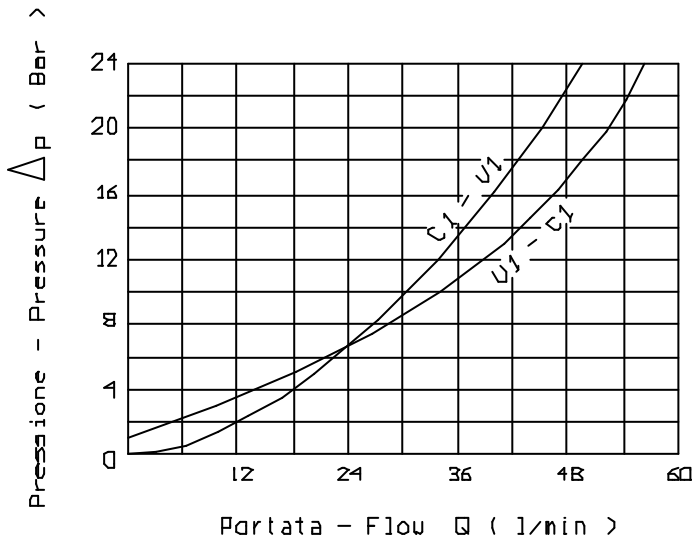
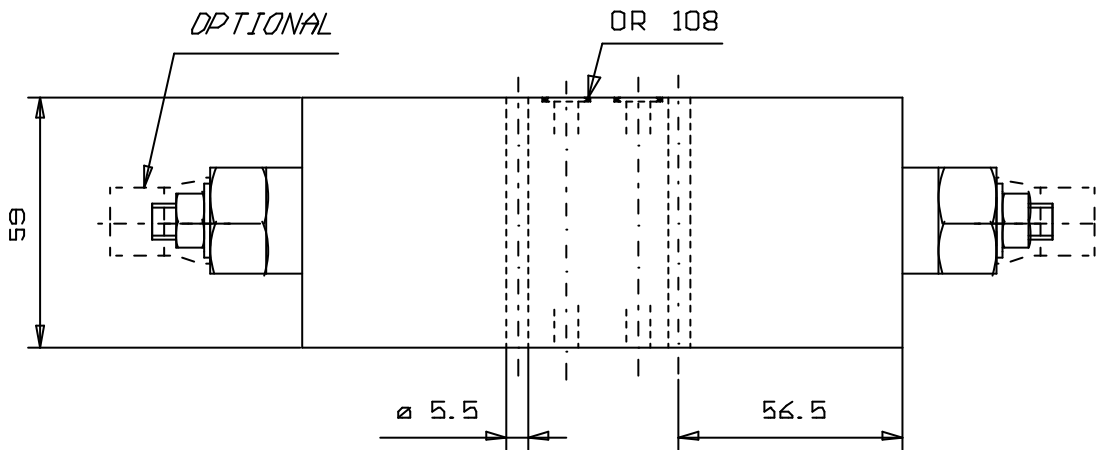
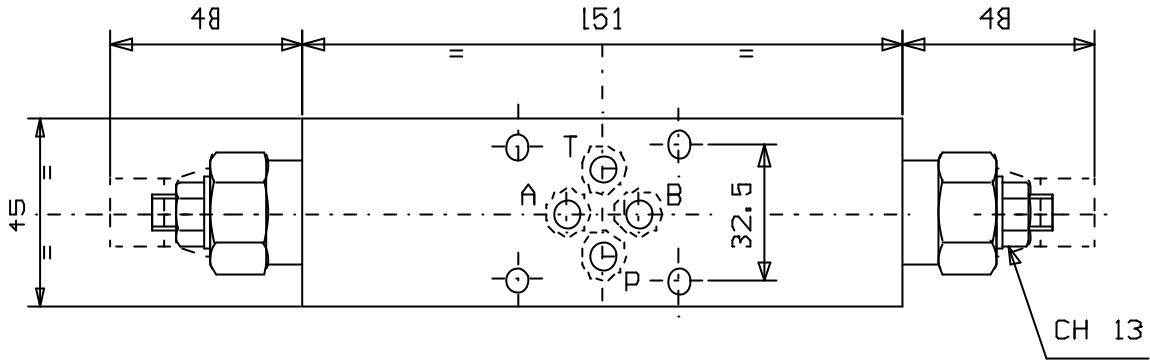
SANDWICH VALVE WITH DUAL PILOT ASSISTED OVERCENTRE,
 "TR" SERIES, CETOP 03

Tipo/Type:

VBDE/TR/CT 3

8

03.00



Press. max. (Bar)
350

A richiesta On request
Collettore in acciaio Steel body

Rapp. Pilot.
4,2:1

Portata max. (l/min)
50