



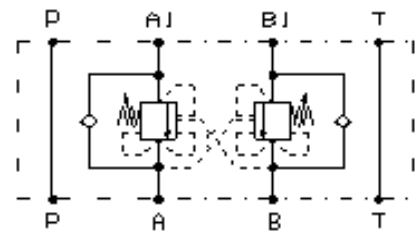
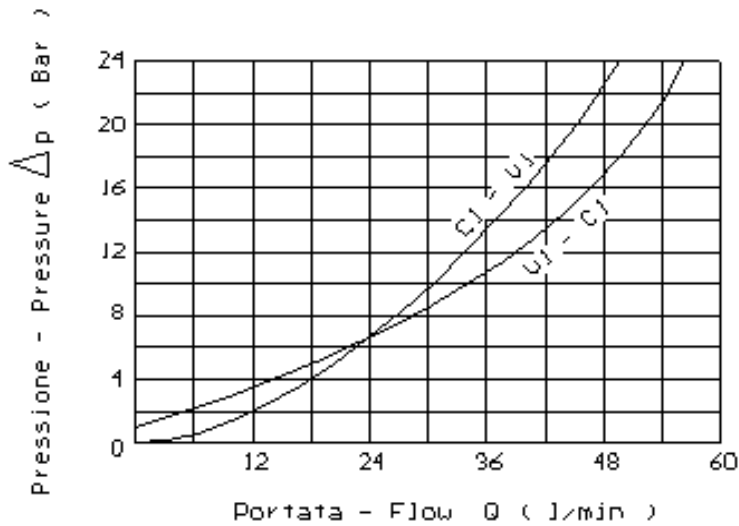
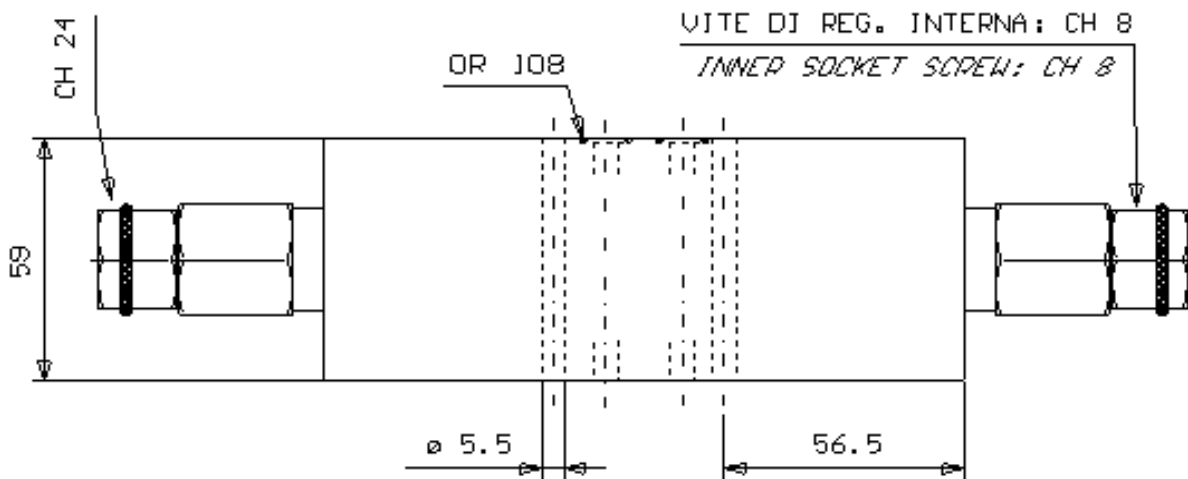
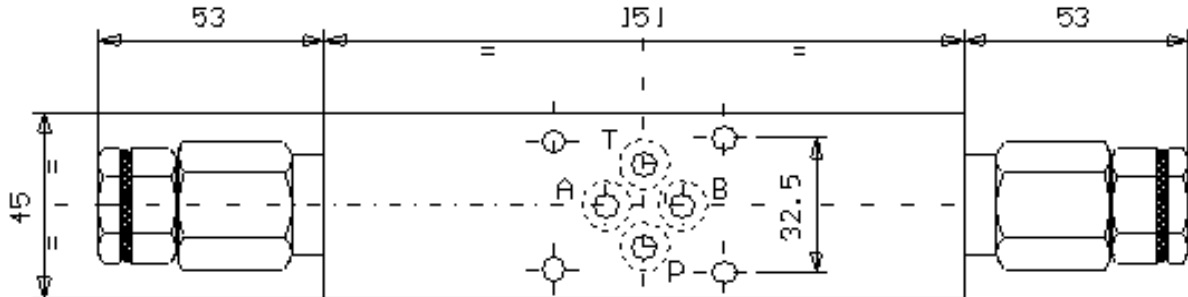
ELEMENTO MODULARE CON VALV. DI BILANCIAMENTO,  
DOPPIO EFFETTO, SERIE "TR-CC", CETOP 03

SANDWICH VALVE WITH DUAL PILOT ASSISTED OVERCENTRE,  
"TR-CC" SERIES, CETOP 03

Tipo/Type: VBDE/TR-CC/CT 3

8

03.10



Press. max. ( Bar )
350

Rapp. Pilot.
4.2:1

Portata max. ( l/min )
50